

AIREG: Enhanced Educational Recommender System with Large Language Models and Knowledge Graphs

Fatemeh Fathi¹[0009-0006-5840-4798]

RWTH Aachen University, Aachen, Germany, fathi@dbis.rwth-aachen.de

Abstract. In the nowadays modern digital era, the overwhelming amount of available online data has established challenges for individuals seeking personalized educational and career pathways with relevant skill dependencies, especially when surfing e-learning and online recruitment platforms. This challenge emphasizes the need for novel advancements in knowledge-enhanced Recommender Systems, offering more personalized, accurate, and timely recommendations. Recently, the rapid development of Large Language Models (LLMs) with their broad knowledge and complex reasoning skills, has significantly enhanced the ability of these systems to offer precise and knowledge-based suggestions. It highlights their potential to enrich these systems using their vast amount of knowledge and sophisticated reasoning capabilities, to leverage them as an alternative to structured knowledge bases like knowledge graphs (KGs). However, LLMs have still limitations for knowledge-based content generation, especially when it's a domain-specific case. To address this issue, researchers propose to enhance the system with explicit factual knowledge from KGs. This research aims to explore advanced technological developments in knowledge-enhanced conversational Recommender Systems to propose a novel system, named **AIREG** for the educational and career development sectors.

Keywords: Recommender System · Large Language Model · Knowledge Graph · Knowledge Extraction

1 Introduction

In the evolving educational technology landscape, with the rapid expansion of digital education and career development, Recommender Systems plays a vital role in providing relevant and personalized learning materials and career pathways [13]. For instance, consider a scenario where a learner is exploring topics in software development for upskilling or reskilling according to their current resume and some additional background information they provide through an interaction with the system to find a suitable learning or career path. Traditional Recommender Systems mostly recommend resources based on their popularity or keyword matching and rely on conventional machine-learning techniques [22]. These systems often provide general recommendations that may not be aligned

with the unique interests or demands of the user since they fail to take into account the semantics of user interactions or current available educational and job opportunities.

The rapid evolution of the job market and the increasing demand for digital and online learning platforms, digital certificates and online submitting documents, all pose significant challenges in career development, necessitating effective and standard methods [10]. However, current Recommender Systems fall short of dynamically integrating structured data such as interactions data, about evolving education opportunities, career paths, and individual user profiles. This limitation prevents personalized, proactive career guidance and educational recommendations, emphasizing the need for an advanced approach that combines the capabilities of Large Language Models (LLMs) and knowledge Graphs (KGs), with user’s profile and their interaction data to enhance Recommender Systems’ effectiveness in navigating the complexities of career advancement and continuous learning. This gap emphasizes the importance of developing innovative approaches that leverage the latest advancements in artificial intelligence (AI).

The emergence of LLMs and KGs, and their integration into Recommender Systems, can significantly improve the accuracy and relevance of educational recommendations. LLMs, with their deep understanding of context and user-generated content [2], along with KGs that provide a semantic web of interconnected data, can significantly enhance the personalization and accuracy of recommendations delivered to users. However, many current approaches consider KGs as static entities, unable to update their knowledge base dynamically [6].

The combination of LLMs and KGs unlocks these limitations. In addition to providing a deep understanding of natural language, user intentions, and preferences, LLMs can provide structured data from unstructured one. On the other hand, KGs will validate and check the feasibility of the extracted information through their reasoning ability. This integration enables Recommender Systems to not only understand the latent and nuanced educational needs of learners but also to align their needs with the most appropriate educational material and resources based on the learner’s learning journey and style [17]. Meanwhile, integrating other AI approaches such as Generative adversarial networks (GANs) models improves the system’s performance significantly [20]. Together, these technologies empower the system to provide recommendations that are not only personalized but also aligned with the latest developments in education and industry. However, integrating these technologies to develop an effective Recommender System poses significant challenges, including the dynamic updating of KGs with real-time data, optimizing user interaction data for more relevant recommendations, and ensuring the system’s adaptability to diverse user needs and market conditions. In this study, we focus on both educational and career domains due to the interconnected nature of these domains. Hence, we propose the *AIREG* designed for both domains. This dual focus of the system represents the system’s ability to adapt and provide in-line recommendations with both learning objectives and long-term career goals.

This research aims to explore these challenges and propose a novel Recommender System framework that makes the way easy for people to choose their educational and career paths, improving accessibility, individualization, and alignment with the changing labor market for career growth and lifelong learning. Section introduces the proposed Recommender System, *AIREG*, which combines the AI capabilities of LLMs with KGs.

The rest of the paper is organized as follows: Section 2 introduces the background and related works to provide insights into the integration of Recommender Systems with LLMs and KGs, and explores the enhanced educational Recommender Systems (*AIREG*), designed especially in education. Section 3 defines the problem and outlines the contributions of this research. Section 4 delves into the methodology, detailing the innovative approaches and technologies employed. Section 5 presents our experimental evaluation plan and metrics to assess the effectiveness of the proposed system. Finally, section 6 summarizes the proposed approach, and provides insights into our plan for this Ph.D. thesis.

2 State of the Art

Since the topic covers a broad range of subtopics and studies, we organize this section by going firstly through KG construction studies. Then we introduce key point papers on integrating LLMs with KGs. One step forward, we explore conducted studies on integrating KGs and LLMs for recommendation tasks. As the last step, we review some key papers using mentioned advanced approaches in the educational and career pathways and resource recommendations.

In the KG construction area, recent studies explored novel approaches for creating KGs from massive unstructured data sources using machine learning and NLP techniques. For instance, [8] used advanced NLP approaches to structure scholarly subject information into knowledge graphs, providing the groundwork for context-aware recommendation systems. Similarly, [15] introduced Text2kgbench, a benchmark for evaluating ontology-driven KG generation from text. Another study by [11] demonstrates the potential of web mining techniques to extract valuable insights from German Labor online resources to provide a rich source of real-time data to construct up-to-date KG through provided APIs.

Nevertheless, while LLMs are performing very well in understanding and processing natural language and mimicking human behavior, they still have issues in recalling some facts while generating knowledge-based contents [21]. To bridge this gap, the integration of LLMs with KGs emerged as a promising approach. Recent studies such as the one conducted by [18] present an overview of integrating LLMs and KGs, which can be considered as a groundwork for the new generation of AI-driven educational tools to provide more accurate, dynamic, and personalized recommendations. They propose a road map in which they discuss how to utilize the combination capabilities of LLMs and KGs for improved inference, knowledge representation, and reasoning. These systems aim to use the extensive knowledge encoded in LLMs and explicit relations in KGs to

enhance Recommender Systems' performance [19]. Furthermore, a comparative analysis of knowledge injection methodologies for LLMs in the scholarly domain conducted by [7] demonstrated that the knowledge injection improves content suggestion accuracy. In a study by [4], the authors demonstrated that using LLMs, such as ChatGPT, they can generate text from KG data, which shows the ability of LLMs to convert structured knowledge into human-readable text. Also, an experiment conducted by [14], investigates how LLMs, such as ChatGPT, can facilitate KGEs by contributing to the development and management of KGs.

Moreover, The incorporation of recent advanced techniques such as Retrieval-Augmented Generation (RAG) approaches, as surveyed by [23], has shown significant results in augmenting LLMs' content generation with structured KG and their information retrieval ability, and improving the personalization and relevancy of recommendations. The development of explainable Recommender Systems using KGs to provide transparency in the recommendation process is also gaining attraction in this research area. Such systems help users understand the reason behind recommendations, which increases their trust and engagement with the system. A study by [5], explores the development of Recommender Systems that utilize KGs to enhance the explainability of their recommendations. They also discuss how KGs can be effectively used to improve the trustworthiness and acceptance of Recommender Systems by users through better explainability. According to this article, by integrating KGs, the system can provide users with clear and logical reasons for its suggestions, which makes the recommendation process more transparent and understandable.

A recent study by [21], proposed the idea of integrating explicit factual knowledge from KGs into pre-trained LLMs (PLMs), which led to the creation of KG-enhanced large language models (KGLLMs). The study also investigates the integration of LLMs into Automatic Speech Recognition (ASR) systems to improve transcription accuracy. Another study conducted by [12], proposes the CHAT-REC framework, an LLM-Augmented Recommender System, which converts user profiles and historical interactions into prompts to enable in-context learning and improve the performance of the system. CHAT-REC also manages cold-start scenarios with new items through prompt-based injection of information into LLMs.

In the education and e-learning domain, [3] proposes the development of a system that improves e-learning experiences by helping students discover courses that match their interests and academic needs more effectively. The development of explainable Recommender Systems using KGs to provide transparency in the recommendation process is also gaining attraction in this research area. A further step forward in the educational domain is the development of KGs and Recommender Systems for suggesting reskilling and upskilling options aligned with the Career domain. An experiment by [20] explores the development of KGs and Recommender Systems to assist individuals in identifying online possibilities for reskilling and upskilling. The RS can offer personalized learning pathways based on users' skill gaps and career goals. A study conducted by [1],

proposes a multi-objective fused personalized recommendations for educational resources to improve recommendations' diversity and accuracy. The system employs a recommendation layer including SOM-CNN and ITEM-SOM models to provide a recommendation list based on learner users' presentation features and education resources' representation features. To improve the user experience by providing more relevant and varied educational content, this approach represents a significant advancement in recommending personalized educational resources.

3 Problem Statement and Contributions

This thesis aims to explore and address the challenges of effectively integrating several advanced technologies, such as LLMs, KGs, and Generative adversarial networks (GANs), to provide more enhanced recommendations for both educational pathways and job market opportunities. By leveraging the capability of KGs for structured knowledge representation, LLMs for their natural language processing and deep understanding and content generation abilities, and GANs for simulating and predicting job market trends, in this study we propose the AIREG recommender system which provides personalized, accurate, and timely recommendations.

3.1 Research Questions

To explore and investigate the defined problem and its challenges, this research will focus on addressing the following research questions:

RQ1: Does the integration of external knowledge bases such as KGs enhance the performance of LLM-based Recommender Systems in providing personalized recommendations for employees and learners, while ensuring a high level of personalization and accuracy?

RQ2: What methodologies could be deployed to dynamically update KGs and LLMs with real-time job market data and user interactions?

RQ3: How can AIREG leverage user feedback to dynamically refine and enhance the personalization and accuracy of recommendations?

3.2 Main Contributions

The main contribution of this research is the integration of cutting-edge technologies, such as KGs, LLMs, and GANs within the semantic web framework to implement a highly adaptive recommender system, named AIREG, tailored for both career and educational pathways. Furthermore, to be aligned with the European regulatory standards, we aim to leverage detailed regional structures and domain-specific competencies by integrating the German Labor Market KG through a study conducted by [11]. With this approach, our system aims to

overcome the limitations of the ESCO—as a European classification of skills, competencies, and Qualifications¹—based recommender systems in this research area. We hypothesize that this integration not only enhances the system’s ability to provide personalized and accurate recommendations but also introduces a dynamic framework for continuously updating the system with real-time job market and educational data.

4 Methodology

In this section, we delve into the details of the proposed AIREG system and its components. As shown in Fig. 1, AIREG has the following five main components:

1. **User profile enhancement:** To complete and improve the quality of the user’s resumes, we utilize a prompting approach leveraging the LLM’s knowledge and ability in natural language processing based on the [10] benchmark. With some adjustments in their approach, we also establish two different ways to enhance user’s resume as follows:
 - **Interactive resume completion** To enhance the quality of the user’s resume, we use both the user’s self-description text as their resume and some additional background information by selecting some additional skills via a provided skill list associated with the European regulations like GLMO [9]. We leverage the LLM with a designed prompt associated with the recommendation field to provide educational or job-related recommendations based on the user’s resume and the additional background information provided by the user. Utilizing the interactive behavior of the user through providing additional background information, we aim to alleviate the fabricated and hallucinated generation of LLMs. In this approach, we also aim to fill gaps and suggest additions or improvements in the user’s resume that are compatible with current industry standards.
 - **Resume quality alignment (GANs-based model)** To improve the representations of low-quality resumes, we’ll make use of a GAN model based on the [10] benchmark to align low-quality generated resumes with high-quality ones by improving the representations of low-quality resumes. However, this benchmark considers a wrong assumption which indicates few-shot and many-shot users provide low and high-quality resumes respectively—an assumption that AIREG addresses by manually verifying the quality of resumes. The GAN model comprises a generator and a discriminator, where the generator aims to enhance resume representations to make them indistinguishable from the discriminator, which in turn attempts to differentiate between refined representations and high-quality ones. Through continuous iterative training, the generator’s ability to improve resume quality will be significantly enhanced, which leads to more accurate educational and career pathway recommendation results.

¹ <https://esco.ec.europa.eu/en>

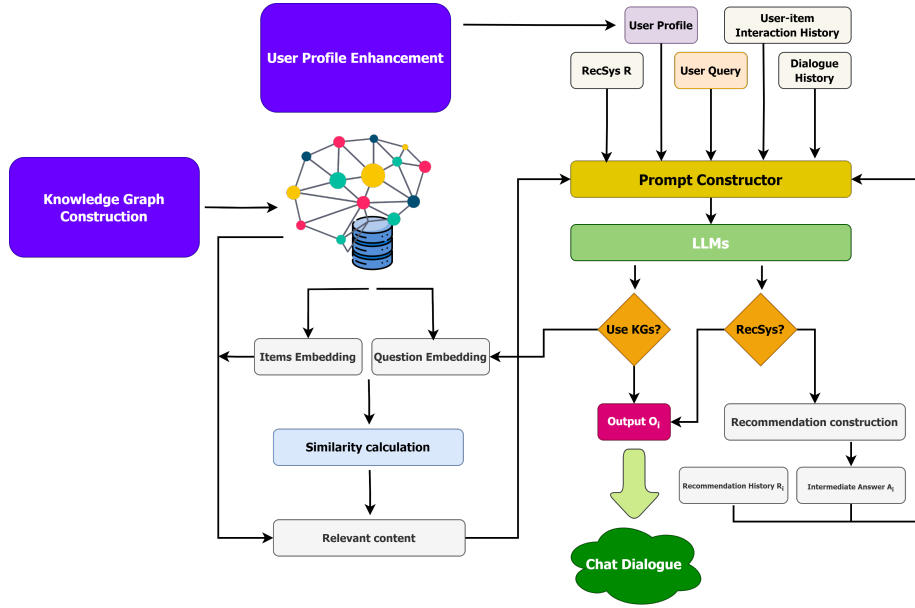


Fig. 1: The architectural design of the AIREG system

2. **The Knowledge Graph:** The KG construction involves scrawling data using APIs provided by various education providers to create a more detailed graph based on the [11] as our benchmark for the KG construction part. The method involves sourcing, analyzing, and linking disparate data sources from the web, encompassing online advertisements, information portals, and official government websites, to uncover and map the intricate network of educational pathways within the German labor market. The KG then facilitates semantic searches and complex queries, enhancing the system's ability to provide focused and up-to-date recommendations for continuing education.
3. **Integrating the recommender system with LLM:** Our proposed framework leverages the recommendation method called LLM-based GANs Interactive Recommendation (LGIR), introduced by [12] as our benchmark, which combines LLMs and GANs. This method transforms user-profiles and historical interactions into prompts for LLMs, facilitating a conversational interface that can dynamically adapt to user preferences. We'll initiate our research based on provided prompts by our benchmark. The system efficiently learns user preferences using in-context learning and provides individualized recommendations across different domains. Hence, improving the system's ability to manage cold-start scenarios. This integration represents a significant advancement in recommender systems technology providing a more engaging and user-centric experience. We adopt LLMs such as Mistral and GPT-4 OpenAI as the LLM model in this study.

As shown in Fig. 1, the model takes as input user-item history interactions, user profile, user query, and history of dialogue before the current query and incorporates all in a designed prompt through the prompt constructor module which triggers the LLM. The LLM then interfaces with any recommender system R. As the user profile, we use the enhanced user profile provided by the user profile enhancement process. The proposed framework introduces how to use the external information about education providers along with ESCO information to enrich the model with more information about educational requirements, hence, mitigating cold-start scenarios.

5 Evaluation Plan

To implement the proposed integrated approach effectively, many datasets, and evaluation metrics based on the baselines would be essential. In this section, we describe the plan for evaluating the performance and effectiveness of the AIREG system based on different datasets and evaluation metrics.

5.1 Datasets

- For this thesis, we will leverage multiple datasets to construct the KG, enhance user profiles, and evaluate the recommender system’s performance. These datasets are essential to ensure that the AIREG system can provide accurate, personalized, and timely recommendations for users aiming for reskilling and upskilling opportunities.
- **Knowledge Graph Construction:** In case we don’t have any access to the KG construction approach introduced by [11], we’ll use the list of introduced APIs in their study to construct our own KG. , and online course platforms such as Udemy, and Coursera.
- **User Profile Enhancement:** enhancing the user’s profile relies on datasets containing information from historical user interaction data with Recommender Systems (like real online interaction logs for job recommendation), and user-provided information such as resumes, educational backgrounds, and job experiences).
- **Career Path Recommendation:** To evaluate the career path recommendations, we can use the publicly available CareerCoach 2022 gold standard dataset.

5.2 Proposed Evaluation

To evaluate the performance of the proposed system, we will consider a multi-facet evaluation plan:

Qualitative Evaluation: To evaluate the performance of the component in enhancing user engagement, we employ the Usability evaluation approach [16], which investigates metrics such as Learnability, Efficiency, Memorability, Errors, and Satisfaction. This evaluation will include participants from students and learners, and career-oriented individuals to evaluate the designed system.

Quantitative Evaluation:

1. Top-K recommendations metrics, using widely used metrics such as Precision, Recall, F1-score, Normalized Discounted Cumulative Gain (NDCG), mean average ranking precision (MAP), and mean reciprocal rank (MRR) to evaluate the Top-K recommendations of the system.
2. Ranking prediction metrics, such as Root Mean Squared Error (RMSE), and Mean Absolute Error (MAE) to evaluate the ranking of provided recommendations.
3. Investigating the performance of the system with different LLMs and recommendation methods
4. Knowledge Graph Construction, assessment using popular metrics such as Precision, Recall, and F1-score.

6 Conclusion

This symposium paper explores the challenges of integrating state-of-the-art technologies such as Large Language Models (LLMs) and Knowledge Graphs (KGs) to develop a new kind of Recommender Systems within the realms of education and career. The objective is to tackle the limitations of existing Recommender Systems by leveraging the unique capabilities of these technologies to provide more personalized, accurate, and timely educational and career pathways. The proposed Recommender System, AIREG, which combines the AI capabilities of LLMs with KGs and associated components was discussed in (Section 4). Given that we are at an early stage of the entire thesis research and the conceptualized AIREG system, the datasets and evaluation criteria might change, we are looking forward to discussing this research with our mentor and the possibility of establishing long-term collaboration with our institute in the field of Semantic Web and KG.

References

1. Multi-objective fused educational resource personalized recommendation system and method (2020)
2. Allen, B.P., Stork, L., Groth, P.: Knowledge engineering using large language models. arXiv preprint arXiv:2310.00637 (2023)
3. Amane, M., Aissaoui, K., Berrada, M.: A multi-agent and content-based course recommender system for university e-learning platforms. In: International Conference on Digital Technologies and Applications. pp. 663–672. Springer (2021)
4. Axelsson, A., Skantze, G.: Using large language models for zero-shot natural language generation from knowledge graphs. arXiv preprint arXiv:2307.07312 (2023)
5. Balloccu, G., Boratto, L., Fenu, G., Marras, M.: Hands on explainable recommender systems with knowledge graphs. In: Proceedings of the 16th ACM Conference on Recommender Systems. pp. 710–713 (2022)
6. Biswas, R., Kaffee, L.A., Cochez, M., Dumbrava, S., Jendal, T.E., Lissandrini, M., Lopez, V., Mencía, E.L., Paulheim, H., Sack, H., et al.: Knowledge graph embeddings: open challenges and opportunities. *Transactions on Graph Data and Knowledge* **1**(1), 4–1 (2023)

7. Cadeddu, A., Chessa, A., De Leo, V., Fenu, G., Motta, E., Osborne, F., Recupero, D.R., Salatino, A., Secchi, L.: A comparative analysis of knowledge injection strategies for large language models in the scholarly domain. *Engineering Applications of Artificial Intelligence* **133**, 108166 (2024)
8. Dessì, D., Osborne, F., Recupero, D.R., Buscaldi, D., Motta, E.: Generating knowledge graphs by employing natural language processing and machine learning techniques within the scholarly domain. *Future Generation Computer Systems* **116**, 253–264 (2021)
9. Dörpinghaus, J., Binnewitt, J., Winnige, S., Hein, K., Krüger, K.: Towards a german labor market ontology: Challenges and applications. *Applied Ontology* (Preprint), 1–23 (2023)
10. Du, Y., Luo, D., Yan, R., Wang, X., Liu, H., Zhu, H., Song, Y., Zhang, J.: Enhancing job recommendation through llm-based generative adversarial networks. In: *Proceedings of the AAAI Conference on Artificial Intelligence*. vol. 38, pp. 8363–8371 (2024)
11. Fischer, A., Dörpinghaus, J.: Web mining of online resources for german labor market research and education: Finding the ground truth? *Knowledge* **4**(1), 51–67 (2024)
12. Gao, Y., Sheng, T., Xiang, Y., Xiong, Y., Wang, H., Zhang, J.: Chat-rec: Towards interactive and explainable llms-augmented recommender system. *arXiv preprint arXiv:2303.14524* (2023)
13. Lahoud, C., Moussa, S., Obeid, C., Khoury, H.E., Champin, P.A.: A comparative analysis of different recommender systems for university major and career domain guidance. *Education and Information Technologies* **28**(7), 8733–8759 (2023)
14. Meyer, L.P., Stadler, C., Frey, J., Radtke, N., Junghanns, K., Meissner, R., Dziwis, G., Bulert, K., Martin, M.: Llm-assisted knowledge graph engineering: Experiments with chatgpt. In: *Working conference on Artificial Intelligence Development for a Resilient and Sustainable Tomorrow*. pp. 103–115. Springer (2023)
15. Mihindukulasooriya, N., Tiwari, S., Enguix, C.F., Lata, K.: Text2kgbench: A benchmark for ontology-driven knowledge graph generation from text. In: *International Semantic Web Conference*. pp. 247–265. Springer (2023)
16. Nielsen, J., Molich, R.: Heuristic evaluation of user interfaces. In: *Proceedings of the SIGCHI conference on Human factors in computing systems*. pp. 249–256 (1990)
17. Pan, J.Z., Razniewski, S., Kalo, J.C., Singhania, S., Chen, J., Dietze, S., Jabeen, H., Omeljanenko, J., Zhang, W., Lissandrini, M., et al.: Large language models and knowledge graphs: Opportunities and challenges. *arXiv preprint arXiv:2308.06374* (2023)
18. Pan, S., Luo, L., Wang, Y., Chen, C., Wang, J., Wu, X.: Unifying large language models and knowledge graphs: A roadmap. *IEEE Transactions on Knowledge and Data Engineering* (2024)
19. Wang, J., Shi, Y., Yu, H., Yan, Z., Li, H., Chen, Z.: A novel kg-based recommendation model via relation-aware attentional gen. *Knowledge-Based Systems* **275**, 110702 (2023)
20. Weichselbraun, A., Waldvogel, R., Fraefel, A., van Schie, A., Kuntschik, P.: Building knowledge graphs and recommender systems for suggesting reskilling and upskilling options from the web. *Information* **13**(11), 510 (2022)
21. Yang, L., Chen, H., Li, Z., Ding, X., Wu, X.: Chatgpt is not enough: Enhancing large language models with knowledge graphs for fact-aware language modeling. *arXiv preprint arXiv:2306.11489* (2023)

22. Zhang, S., Yao, L., Sun, A., Tay, Y.: Deep learning based recommender system: A survey and new perspectives. *ACM computing surveys (CSUR)* **52**(1), 1–38 (2019)
23. Zhao, P., Zhang, H., Yu, Q., Wang, Z., Geng, Y., Fu, F., Yang, L., Zhang, W., Cui, B.: Retrieval-augmented generation for ai-generated content: A survey. *arXiv preprint arXiv:2402.19473* (2024)